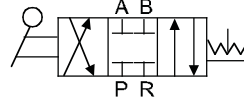
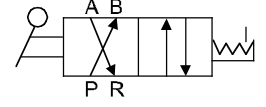


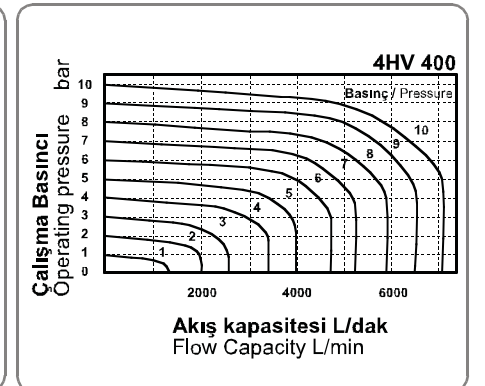
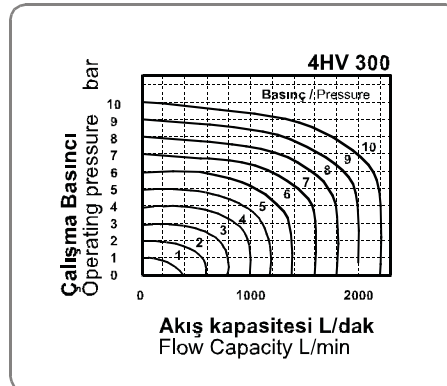
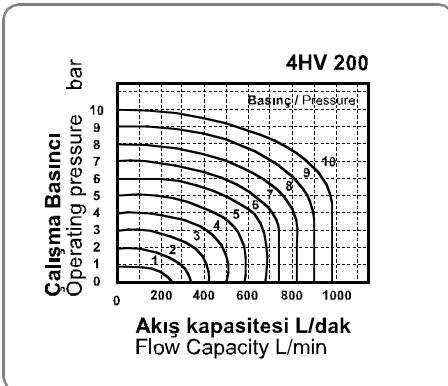
**4HV Serisi Kol Kumandalı Valfler ( 4/3 - 4/2 ) / 4HV Series Hand Lever Valves ( 4/3 - 4/2 )**

**Sembol / Symbol**
**4/3 Kapalı Merkez / Closed Center**

**4/2 Kapalı Merkez / Closed Center**

**Sipariş Kodu / Ordering Code**

4HV	2	30	06	S
<b>Model</b> Model	<b>Kod</b> Code	<b>Valf Tipi</b> Valve Type	<b>Bağlantı Ölçüsü</b> Port Size	<b>Bağlantı</b> Installation
4HV: 4 Yol 3/2 Konum Kol Kumandalı Valf	2: 200 Serisi / Series 3: 300 Serisi / Series 4: 400 Serisi / Series	10: 4 Yol 2 Konum 4 Port 2 Position 30: 4 Yol 3 Konum 4 Port 3 Position	06: 1/8" 08: 1/4" 10: 3/8" 15: 1/2" 20: 3/4"	Boş: Gövde Bağlantı Blank: Body Installation S: Panel Bağlantı S: Panel Installation

**Özellikler / Specification**

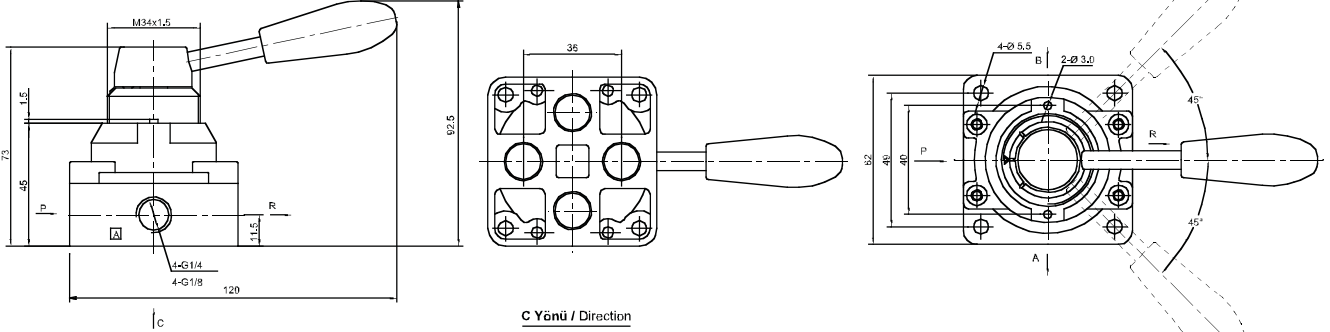
Model / Model	4HV210-06 4HV230-06	4HV210-08 4HV230-08	4HV310-08 4HV330-08	4HV310-10 4HV330-10	4HV410-15 4HV430-15	4HV410-20 4HV430-20
<b>Akışkan / Fluid</b>	40µm filtrelenmiş hava / Air ( to be filtered by 40µm filter element )					
<b>Tip / Type</b>	4 Yol 2 Konum / 4 Port 2 Position 4 Yol 3 Konum / 4 Port 3 Position					
<b>Bağlantı Ölçüsü / Port Size</b>	1/8"	1/4"		3/8"	1/2"	3/4"
<b>Orifis Çapı / Orifice Size</b>	14 mm <sup>2</sup> / Cv = 0.78	16 mm <sup>2</sup> / Cv = 0.89	30 mm <sup>2</sup> / Cv = 1.67	33 mm <sup>2</sup> / Cv = 1.83	88 mm <sup>2</sup> / Cv = 4.89	95 mm <sup>2</sup> / Cv = 5.27
<b>Basınç Aralığı / Pressure Range</b>	0~10.0 bar / 0~1.0MPa / 0~142Psi					
<b>Test Basıncı / Proof Pressure</b>	15.0 bar / 1.5MPa / 213Psi					
<b>Sıcaklık / Temperature</b>	-5 ~ 60°C					

**Akış Diyagramı / Flow Chart**


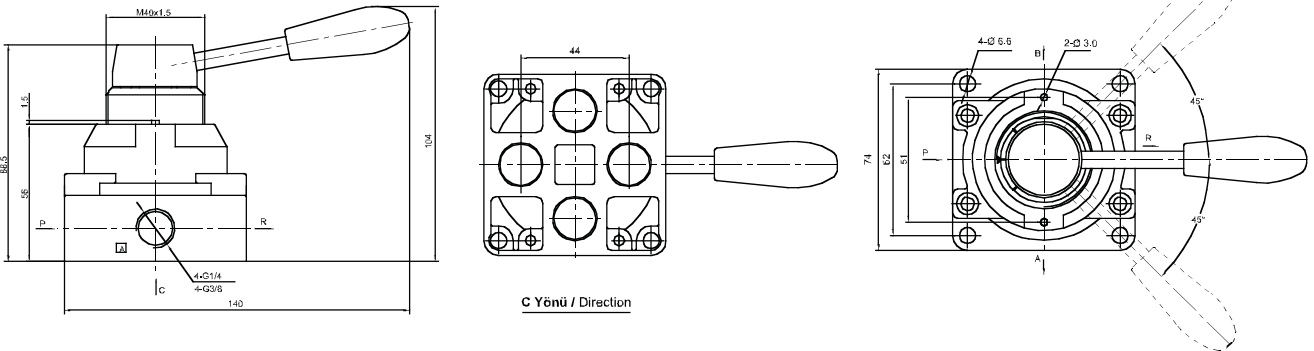
4HV Serisi Kol Kumandalı Valfler ( 4/3 - 4/2 ) / 4HV Series Hand Lever Valves ( 4/3 - 4/2 )

Teknik Çizimler / Technical Drawings

4HV200



4HV300



4HV400

